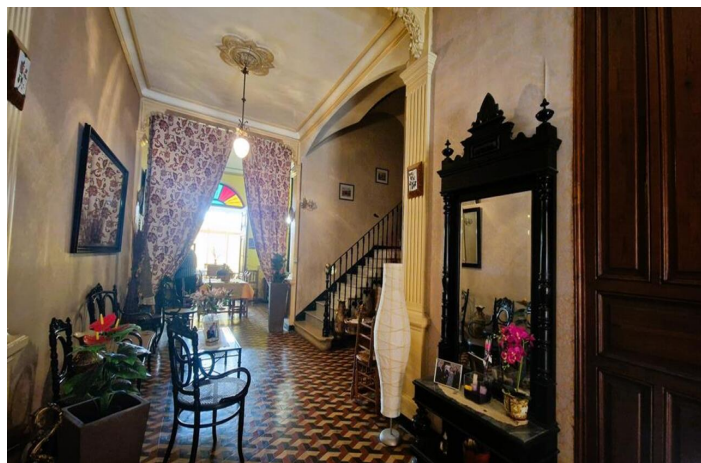
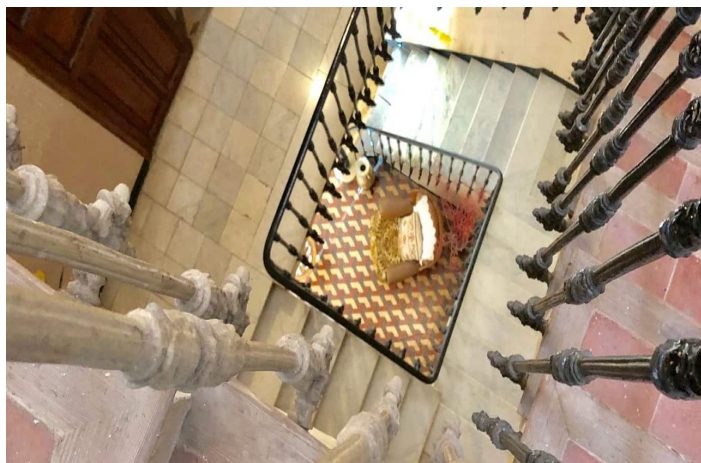
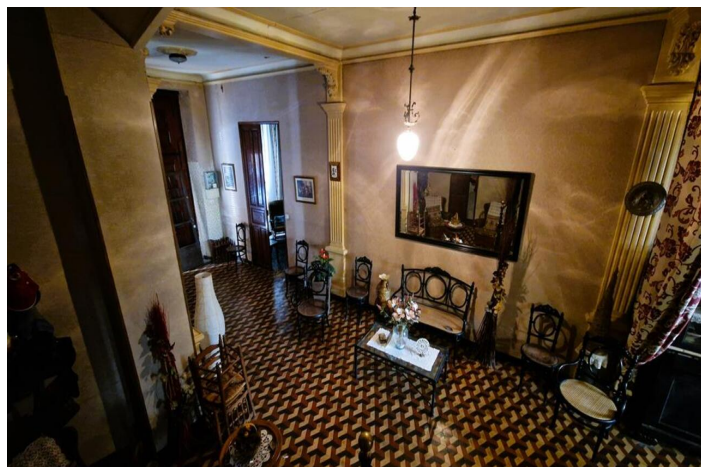
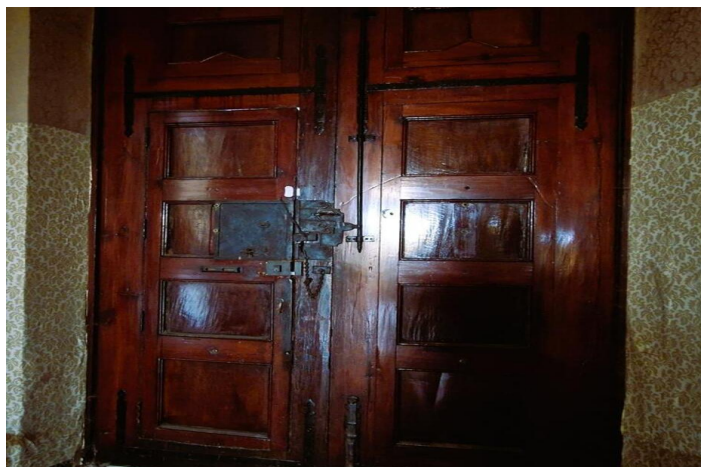




Geschakelde Woning te koop in Parcent, Parcent

850.000 €

Referentie: RS10261 Slaapkamers: 8 Badkamers: 2 Plotgrootte: 453m² Perceelgrootte: 945m²





Marina Alta, Jalón

Extensive, historic town house in Parcent, Jalon valley, Costa Blanca. Jacaranda Spain are proud to introduce this, very rare town house, steeped in the history of the beautiful, sleepy, Spanish pueblo of Parcent. It is incredibly rare for a townhouse of this size and stature, located in the stunning central plaza, to come onto the market. Built in the 1940's, this would have been a palatial family home for a prominent resident of considerable standing in the community. The townhouse is a listed building so the outside cannot be altered. The character of the building has been preserved with all the original floor tiles, wooden beams and the doors, which are simply stunning. There is a patio leading to a huge outside storage area and room. This annex is built over two floors, approximately 177m². The new owner will be someone looking to own a piece of history. The reform of the interior could be outstanding. The buyer with vision could combine the authentic original features with some contemporary touches to create a home fit for the pages of a magazine. As it stands, the building and interior are in very good condition. The sheer size of the house means you could create up to fifteen bedrooms to establish a boutique hotel or bed and breakfast business. The location, in the heart of the town, assures a business such as this, an excellent turnover. The area is extremely popular for tourists, walkers and cyclists. There are bars, restaurants, a small supermarket, baker and butcher in the village and the larger towns of Jalón and Orba are a 5 to 10 minute drive away. The coastal town of Denia with blue flag, sandy beaches is a 20 minute drive. This is an exceptional opportunity. Contact us for further details and a viewing appointment.



Kenmerken:

Close to medical centre

Mains Water

Close to schools

Walking distance to shops, restaurants, Mains Electricity

Panoramic Views

...