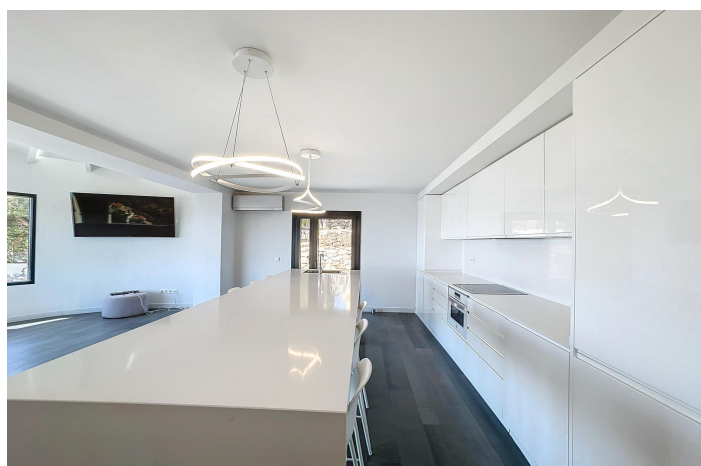




Detached Villa for sale in Benitachell, Benitachell

1,200,000 €

Reference: RS10436 Bedrooms: 3 Bathrooms: 2 Plot Size: 1,113m² Build Size: 163m²





Costa Blanca North, Benitachell

We present a magnificent refurbished villa in the exclusive residential area of Camelias, within the prestigious Cumbre del Sol residential development, located between the charming towns of Jávea and Moraira, in the municipality of Benitachell. This impressive villa has a constructed area of 163 m² distributed over two floors on a large plot of 1113 m². The property is complemented by several terraces totalling approximately 80 m², offering multiple spaces to enjoy the wonderful Mediterranean climate. The villa has three large double bedrooms, two elegant bathrooms, a guest toilet and a practical storage room. The modern open-plan kitchen integrates perfectly with the living-dining room, creating an open-plan and cosy space, ideal for family and friends gatherings. One of the highlights of this property are its spectacular sea views, where the imposing cliffs merge with the blue horizon, providing an incomparable sense of peace and serenity. Natural light floods every corner of the villa, creating a warm and bright atmosphere in every room. The private pool area, surrounded by a large terrace, integrates in perfect harmony with the exquisite garden, offering an oasis of tranquillity with breathtaking panoramic views. This is the perfect place to relax, soak up the sun and enjoy the beautiful surroundings. This villa is a unique opportunity for those looking for a luxury property in an unbeatable location. Don't miss the opportunity to live in this Mediterranean paradise, contact us today for more information and to arrange a viewing! Cumbre del Sol, where your dreams of seafront living come true. Just 1 to 3 kilometres away, you will find a full range of services to make the most of your day-to-day life: Beaches and coves: access to the Moraig, Cala dels Testos and Cala Llebeig coves Leisure and restaurants: the exclusive Dreamsea Mediterranean Camp with bar and restaurant, as well as the La Cumbre restaurant and other bars and cafés Daily services: the Adelfas Shopping Centre, with the Pepe La Sal supermarket, hairdresser, maintenance and rental agency, pharmacy and more Sports facilities: paddle tennis and tennis courts, gym and equestrian centre nearby Educational centres: the prestigious Lady Elizabeth School, just a few steps away Other supermarkets and shops: Mas y Mas, Mercadona and shops in the town centre of Benitachell Golf and leisure: Jávea golf course, just 4-5 km away In addition, within a radius of 7 to 11 km, you can enjoy the charming beaches of Portet de Moraira and Arenal de Jávea, ideal for relaxing or practising water sports. Are you looking for a place to build your dream home or invest in a high-value property? The Dalias Residential Area offers everything you need: natural surroundings, security, unbeatable views, quality services and a peaceful international community. Contact us today and take the first step towards becoming part of this exclusive enclave in the heart of the Costa Blanca. At Cumbre del Sol Pre-Owned, we help you find your ideal place in the sun.



Features:

Storage Room

Garden

outdoor shower

air conditioning split

construction year: 1985

urbanization: Cumbre del sol

Terrace

open terrace

doble glazing

parking

near the town center

Alarm

near the beach

satelite tv

fenced plot

near the golf course