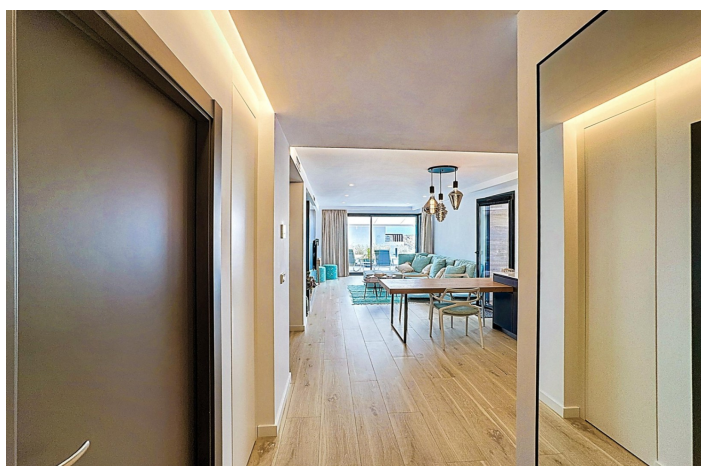
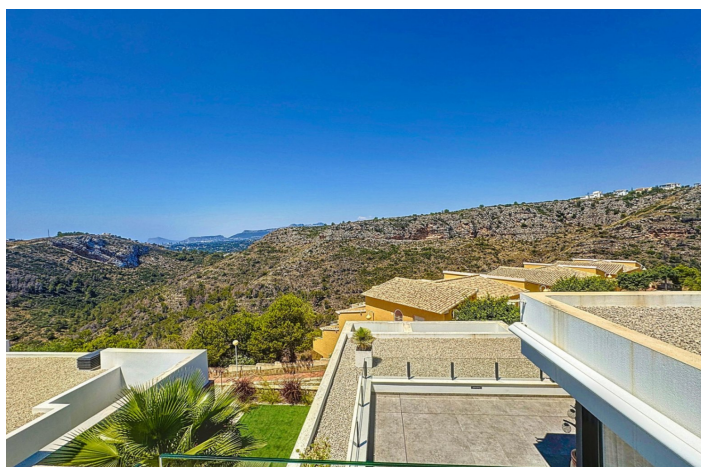




## Penthouse for sale in Benitachell, Benitachell

**549,000 €**

Reference: RS24884 Bedrooms: 2 Bathrooms: 2 Build Size: 165m<sup>2</sup>





## Costa Blanca North, Benitachell

Stunning contemporary penthouse with panoramic views in Montecala Gardens – Cumbre del Sol We present this spectacular contemporary penthouse, located in the exclusive development of apartments Montecala Gardens, within the prestigious urbanisation Cumbre del Sol, between Jávea and Moraira, in the municipality of Benitachell. The property offers a total constructed area of 165 m<sup>2</sup>, distributed in such a way that each space makes the most of the natural light and the incredible views. It has 93 m<sup>2</sup> of interior space, a large 47 m<sup>2</sup> terrace, which includes a pleasant covered area with a 13 m<sup>2</sup> pergola, perfect for enjoying moments of relaxation in the open air, and 25 m<sup>2</sup> of communal areas. The penthouse has two double bedrooms with fitted wardrobes, two full bathrooms, one of which is en-suite to the master bedroom, providing extra privacy and comfort. The living area stands out for its spacious living-dining room with integrated open-plan kitchen, creating a modern, functional and very bright space. It also has a separate laundry room, adding practicality to the property. One of the main attractions of this property is its stunning panoramic views: from the terrace you can enjoy a unique perspective that encompasses the Moraira valley, the majestic Sierra de Bernia with Calpe in the background, and, of course, the sparkling blue of the Mediterranean Sea. In terms of quality and equipment, this penthouse is equipped with underfloor heating, ducted air conditioning throughout the property, lift in the building and top brand finishes, guaranteeing a high level of comfort and design. This is a unique opportunity for those looking for an exclusive property in a privileged natural environment with views that will simply take your breath away. Would you like to receive more information or arrange a viewing? Please do not hesitate to contact us today. We will be delighted to advise you and accompany you throughout the purchase process.

**Montecala Gardens: A Modern Complex in the Heart of Cumbre del Sol** Montecala Gardens is an exclusive modern-style apartment complex located within the prestigious Pueblo Montecala development, located in the Palmeras residential area of the Cumbre del Sol residential development, in Benitachell (Alicante). **Unique Design and Setting** Most of the flats in Pueblo Montecala are south-facing, offering excellent luminosity. In addition, the complex borders the Portet de Moraira special protection area and the Llebeig cove, a natural environment that combines tranquillity and beauty. **Exclusive Communal Areas** Montecala Gardens has a wide variety of communal areas designed for enjoyment and relaxation: Lagoon-style swimming pool, ideal for sunny days. Smaller pool, perfect for year-round use. Spacious solariums and terraces to enjoy the good weather. Social club and gardens for socialising or relaxing. **Proximity to Key Services** Pueblo Montecala's strategic location puts you close to a wide range of amenities and places of interest: 700 metres: Access to the picturesque Llebeig cove. From 2 to 3 km: Morach beach and Los Tiestos cove. Adelfas shopping centre with Pepe La Sal supermarket, hairdresser, maintenance and rental services agency, cafeteria, La Cumbre restaurant and pharmacy. From 4 to 5 km: Mercadona supermarket. The prestigious Lady Elisabeth International School. Equestrian and sports centre with paddle and tennis courts and bar. From 6 to 7 km: Mas y Mas supermarket. The town centre and the beaches of Moraira and El Portet. 13 km: The famous Arenal beach in Javea. The Perfect Home on the Costa Blanca Montecala Gardens is the ideal place for those looking for a modern lifestyle, surrounded by nature and with all amenities at hand. Don't miss this opportunity! Contact us today and discover all that Montecala Gardens has to offer.





## Features:

Covered Terrace

Terrace

open terrace

air conditioning duct based

heating radiating floor

near the town center

internet

Lift

Alarm

near the beach

satelite tv

parking

near the golf course

building homes use only

Storage Room

Laundry

doble glazing

furnished

fenced plot

security door

construction year: 2022