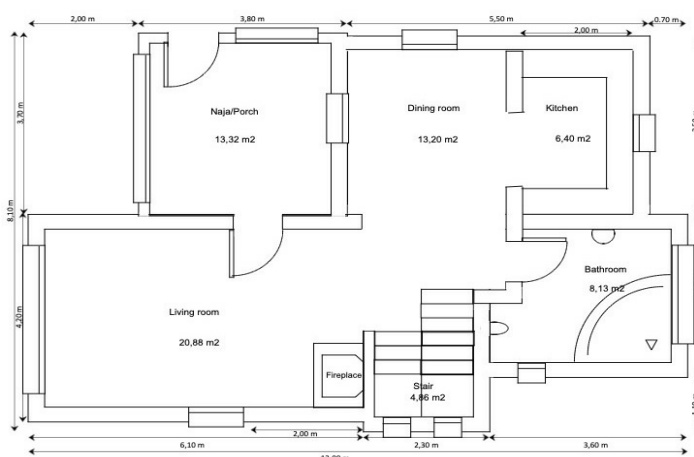
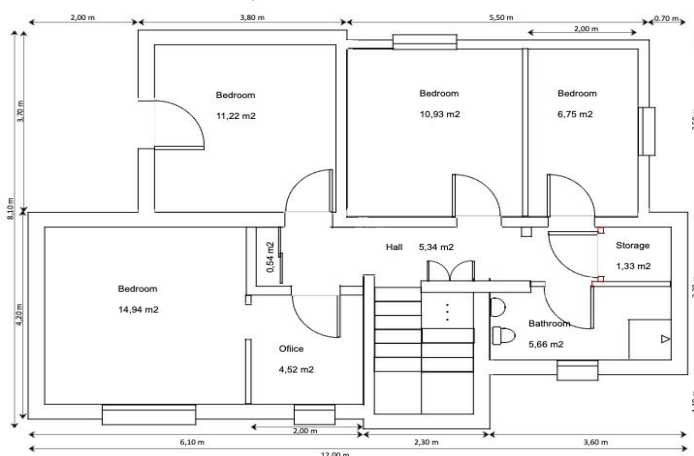




## Detached Villa for sale in Benitachell, Benitachell

**525,000 €**

Reference: RS11140 Bedrooms: 4 Bathrooms: 2 Plot Size: 815m<sup>2</sup> Build Size: 194m<sup>2</sup>





---

## Costa Blanca North, Benitachell

Tucked away in the peaceful area of Valle del Portet, this lovely 4-bedroom villa offers the perfect blend of traditional charm and modern comfort. Just a couple of minutes from local shops and a short drive to the heart of Moraira and its beautiful beaches, the location is spot-on for both everyday living and holiday escapes. The home sits on an elevated south-facing plot with gorgeous open views across the valley and even a glimpse of the sea in the distance. Inside, you'll find a bright and welcoming open-plan living space with wooden beams, a cosy fireplace, and a modern kitchen that makes cooking a pleasure. All the bedrooms are downstairs, including a spacious master suite with a dressing area or study space. Step outside and you've got your own private oasis – a sunny terrace with an 8 x 4m pool, outdoor shower, BBQ area, and total privacy. Whether it's morning coffee in the sun, lazy afternoons by the pool, or al fresco dinners with friends, this space is made for enjoying the Mediterranean lifestyle. Key Features: Elevated south-facing plot with beautiful valley and sea views Private 8 x 4m Roman-style pool and spacious sun terrace Four bedrooms, including master with dressing room/study Character features like wooden beams and a fireplace Air conditioning, central heating, insulation, and double glazing 4kw solar panels for improved energy efficiency Off-road parking and built-in BBQ area Quiet location just minutes from amenities, hiking trails, and Moraira's beaches Contact us today to schedule a viewing!



## Features:

Satellite TV

Barbecue

Internet Available

Naya glazed in

Furniture: Negotiable

Air conditioning partly

Heating: Central Solar

Storage Room

Terrace

Pool: Private 8 x 4

Kitchen: Fully equipped

View: Open views with some sea view

Windows: Double glazing

Utility Room

Fireplace

Kitchen: Open plan

Parking: Off road

Garden: Easy Maintenance

Water: Mains water