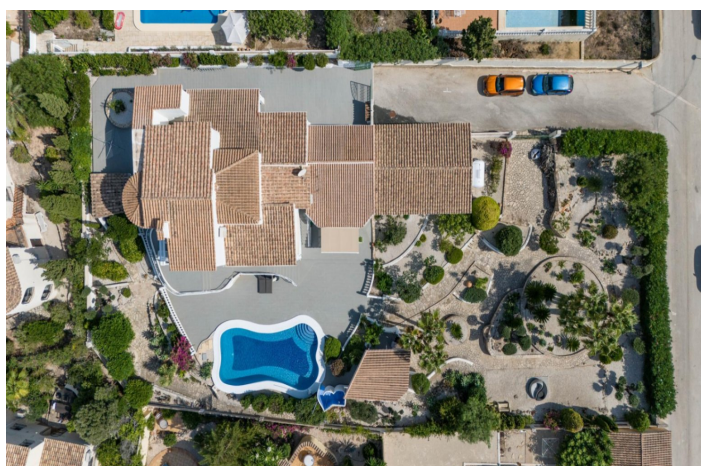




Detached Villa for sale in Benitachell, Benitachell

1,490,000 €

Reference: RS52880 Bedrooms: 5 Bathrooms: 4 Plot Size: 1,758m² Build Size: 428m²





Costa Blanca North, Benitachell

Renovated villa with sea views in the Kalmias residential area – Cumbre del SolA unique home between Jávea and MorairaThis renovated villa is located in the exclusive Kalmias residential area of the Cumbre del Sol urbanization, in the municipality of Benitachell. With a built area of 428 m² and multiple terraces –including a gazebo and a covered barbecue area– the property sits on a corner plot of 1,758 m² ensuring privacy and space. Layout and interior spacesThe villa features 4 double bedrooms with fitted wardrobes or walk-in closets, a study that can be converted into a fifth bedroom, 3 full bathrooms and a guest toilet. It has two living-dining rooms, a laundry room, and several terraces with open views. An additional highlight is the annex building housing a large open-plan kitchen with a spacious dining area, ideal as a summer kitchen for the pool and garden area, plus a bathroom and a multi-purpose room perfect as a games room, cinema, or relaxation space. The property also includes a double garage, a sauna, and a storage room under the gazebo, ideal for storing garden furniture and equipment. Outdoor spaces to enjoy year-roundThe exterior is designed to enjoy the Mediterranean climate. It features a large covered gazebo next to the pool, a covered barbecue area, and a meticulously maintained garden with decorative lighting, Mediterranean plants, and seating areas. The main house is spread over two floors: Ground floor: two bedrooms (one with walk-in closet and en-suite bathroom), a spacious study, guest toilet, first living room with access to the dining area and kitchen with laundry, and a second living room opening directly to the terrace and pool.Upper floor: can be fully independent, with a living-dining room and open-plan kitchen, full bathroom, a double bedroom, and another panoramic bedroom with stunning sea views.Equipment and conditionThe villa is equipped with central heating and air conditioning in most rooms. It is in impeccable condition, ready to move in and enjoy its prime location. Kalmias Residential Area – A privileged settingThe Kalmias residential area in Cumbre del Sol is a consolidated and peaceful neighbourhood made up of 189 plots ranging from 750 m² to 1,200 m². It offers panoramic views of the Mediterranean Sea, the Moraira valley, the Peñón de Ifach in Calpe, and the Sierra de Bernia. With south and southwest orientation, it guarantees sunlight all day and spectacular sunsets. Its location allows quick access to coves such as Moraig, Llebeig, and los Tiestos, as well as the Lady Elizabeth International School, supermarkets, sports areas, the town centre of Benitachell, Moraira, and Jávea. Contact us for more informationIf you are looking for a spacious, renovated villa with sea views in one of the most sought-after areas of the northern Costa Blanca, this is your opportunity. Contact us today to arrange a visit and discover everything this property has to offer.



Features:

Covered Terrace

Garage

Laundry

outdoor shower

satelite tv

heating centralised

fenced plot

security door

urbanization: Cumbre del sol

Storage Room

Alarm

open terrace

phone

air conditioning split

furnished

near the town center

building homes use only

Terrace

Garden

near the beach

doble glazing

barbacue

parking

near the golf course

construction year: 1995