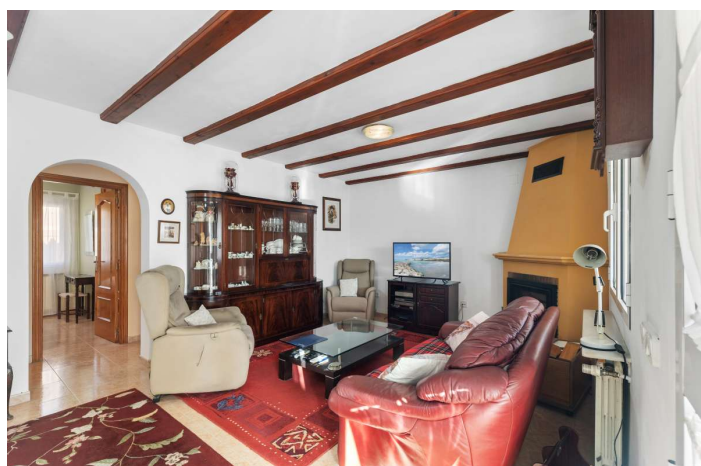




Townhouse for sale in Calpe, Calpe

650,000 €

Reference: RS62482 Bedrooms: 3 Bathrooms: 2 Plot Size: 815m² Build Size: 180m²





Costa Blanca North, Calpe

Set in a peaceful residential environment, this charming home enjoys an excellent balance between tranquility and convenience. Within just a few minutes' drive, you can reach beautiful sandy beaches, seaside coves, lively bars and restaurants, supermarkets, and international schools. The area is ideal both as a holiday retreat and for year-round living, thanks to its calm surroundings, good infrastructure, and easy access to all daily amenities. Built in 1998, the property is arranged on one single level, offering comfortable and practical living. A welcoming covered terrace leads into a bright living room with a fireplace, creating a warm and inviting atmosphere throughout the year. The separate kitchen is functional and well connected to the living space. The night area consists of two bedrooms, a shared bathroom, and a master bedroom with an en-suite bathroom, providing privacy and comfort for family and guests alike. The house is built with a basement layer to prevent humidity, ensuring durability and a healthy indoor climate. It is equipped with gas central heating and an electric water boiler, making it suitable for all seasons. Outside, the property features a low-maintenance garden, perfect for relaxed Mediterranean living. There is parking space for several cars, a double garage, as well as a laundry room and storage room, adding practicality to everyday life. With its south-facing orientation, the house enjoys sunshine throughout the entire day, filling the interiors with natural light and creating a bright, positive living environment. A solid, well-maintained home that offers comfort, sun, and an excellent lifestyle – whether as a permanent residence or a holiday escape on the Costa Blanca.



Features:

Near Transport

Garage

Close to restaurant

Easy access

Storage Room

Fireplace

En suite bathroom

Close to shops

Air Conditioning

Close to schools

Close to town

Commercial area